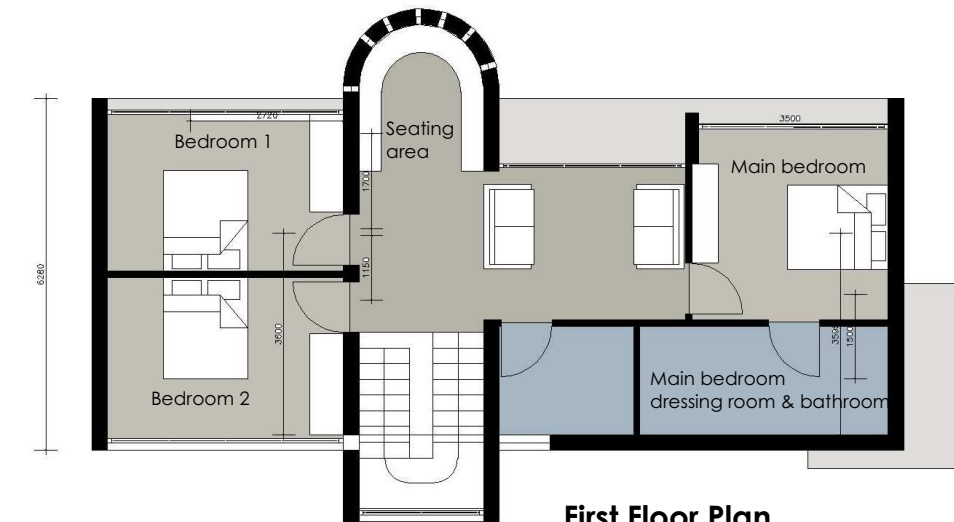
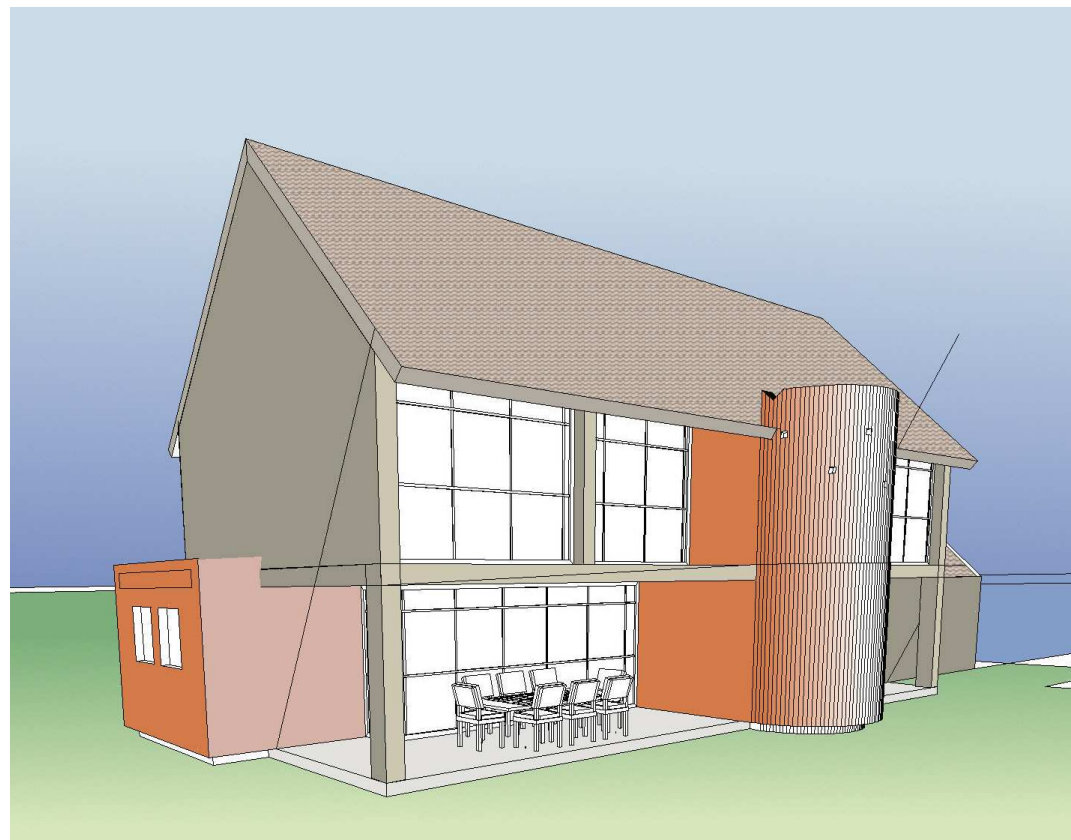


Sections - Rammed earth wall details



First Floor Plan



Ground Floor Plan

Situated on a semi rural plot on the outskirts of Pretoria that contained a large amount of excavated soil, the discussions around a sustainable design naturally led to the use that soil for a largely rammed earth wall house and office. The design for this small house based on passive climatic principles with all rooms having a north aspect and the northern glazed facade carefully designed in relation to each rooms'heating and cooling requirements for both summer and winter. The rammed earth walls also serve as solar collectors and mediate the internal temperature. On the southern side of the house, the rammed earth soil mix receives straw as an additive to increase it's insulation properties. Local rock is also used in constructing the dividing block containing the rainwater storage tank, guest toilet and stairwell. This dividing block separates the office and house , both internally and externally.

project: House Mokoena
architects and garden designers
GROWING BUILDINGS BUILDING GARDENS

greenbrick

Design cc
ck 2006/ 185347/ 23