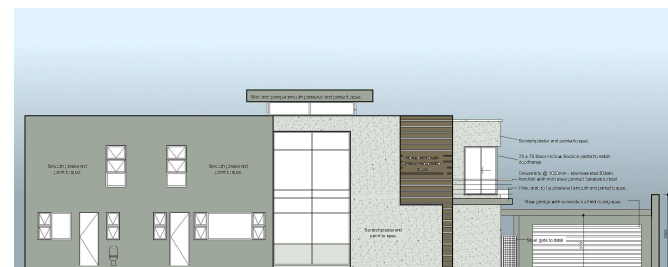


### Ground Floor Plan



A partially completed house was redesigned and extended, including the garden. The central double volume lounge received a new floating concrete roof which extends on the north facade to provide shading to the large glass panel. The stair within the double volume is designed as two sections, the first solid section up to a plinth level provides a solid base to the south glass facade from which the second flight of stairs floats up to the connecting bridge. This double volume space separates the main bedroom wing from the other bedrooms, and brings a sense of light and space to the center of the house - which was previously dark and cramped. The garden was designed as an extension of the ground floor, with a formal deck and entertaining area including pool to the north - off the formal lounge and dining rooms, and a childrens' garden with sandpit and cycle track to the west off the family room.

project: House Strydom Krause

architects and garden designers

greenbrick

Design cc

ck 2006/ 185347/ 23